



47 Wellington Court, Bradford

Bradford

£895 pcm

47 Wellington Court

Bradford, Bradford

This stunning 3-bedroom townhouse is a delightful gem nestled in a sought-after neighbourhood. The property offers a perfect blend of contemporary design and functionality, providing a comfortable and inviting living space. As you step inside, you are greeted by a spacious living room, adorned with natural light streaming through the double-glazed windows, creating a warm and welcoming ambience. The modern kitchen suite is the focal point of the home, featuring sleek countertops, integrated oven/hob appliances, and ample storage space, making meal preparation a breeze.

Ascending to the upper level, you will find three generously sized bedrooms, each offering a tranquil retreat for rest and relaxation. The modern bathroom suite exudes luxury with its exquisite finishes and fixtures, promising a rejuvenating experience. With the convenience of double glazing and gas central heating, you can enjoy a cosy atmosphere throughout the changing seasons, creating a true sanctuary to call home. This property is truly a rare find, offering a harmonious blend of style, comfort, and practicality for the discerning homeowner.

This property offers the perfect opportunity to embrace a lifestyle of peace and tranquillity, while still being conveniently located near local amenities and transport links. Don't miss your chance to call this exquisite townhouse your own and experience the epitome of modern living in a coveted location. Schedule a viewing today and prepare to be captivated by all that this property has to offer.

Council Tax band: A



RIGHT

RIGHT

RIGHT

Entrance

Providing access to the property.

Stairs

Stairs providing access to the first floor landing.

Living room

The lounge features large windows, which allows for ample natural light to fill the space. It benefits from gas central heating, ensuring a cozy and comfortable atmosphere during colder months

Kitchen

The kitchen is equipped with a variety of wall and base units, providing ample storage space. Additionally, there is a generous amount of workspace available. You will also find a convenient 1 bowl sink unit with a drainer, a hob, a cooker, as well as the added comfort of gas central heating and double glazing.

Stairs

Stairs providing access to the first floor landing which in return provides access to three bedrooms and the bathroom suite.

Bedroom

The bedroom is enhanced by modern decor and flooring. It also enjoys the advantages of gas central heating and double glazing.

Bedroom

The second bedroom benefits from neutral decor as well as the comfort of gas central heating and double glazing

Bedroom**Bathroom**

The family bathroom is partially tiled and features a 3-piece suite, which includes a panelled bath, a low level W.C., a pedestal hand basin





Entrance

Providing access to the property.

Stairs

Stairs providing access to the first floor landing.

Living room

The lounge features large windows, which allows for ample natural light to fill the space. It benefits from gas central heating, ensuring a cozy and comfortable atmosphere during colder months

Kitchen

The kitchen is equipped with a variety of wall and base units, providing ample storage space. Additionally, there is a generous amount of workspace available. You will also find a convenient 1 bowl sink unit with a drainer, a hob, a cooker, as well as the added comfort of gas central heating and double glazing.

Stairs

Stairs providing access to the first floor landing which in return provides access to three bedrooms and the bathroom suite.

Bedroom

The bedroom is enhanced by modern decor and flooring. It also enjoys the advantages of gas central heating and double glazing.

Bedroom

The second bedroom benefits from neutral decor as well as the comfort of gas central heating and double glazing

Bedroom

Bathroom

The family bathroom is partially tiled and features a 3-piece suite, which includes a panelled bath, a low level W.C., a pedestal hand basin



Entrance

Providing access to the property.

Stairs

Stairs providing access to the first floor landing.

Living room

The lounge features large windows, which allows for ample natural light to fill the space. It benefits from gas central heating, ensuring a cozy and comfortable atmosphere during colder months

Kitchen

The kitchen is equipped with a variety of wall and base units, providing ample storage space. Additionally, there is a generous amount of workspace available. You will also find a convenient 1 bowl sink unit with a drainer, a hob, a cooker, as well as the added comfort of gas central heating and double glazing.

Stairs

Stairs providing access to the first floor landing which in return provides access to three bedrooms and the bathroom suite.

Bedroom

The bedroom is enhanced by modern decor and flooring. It also enjoys the advantages of gas central heating and double glazing.

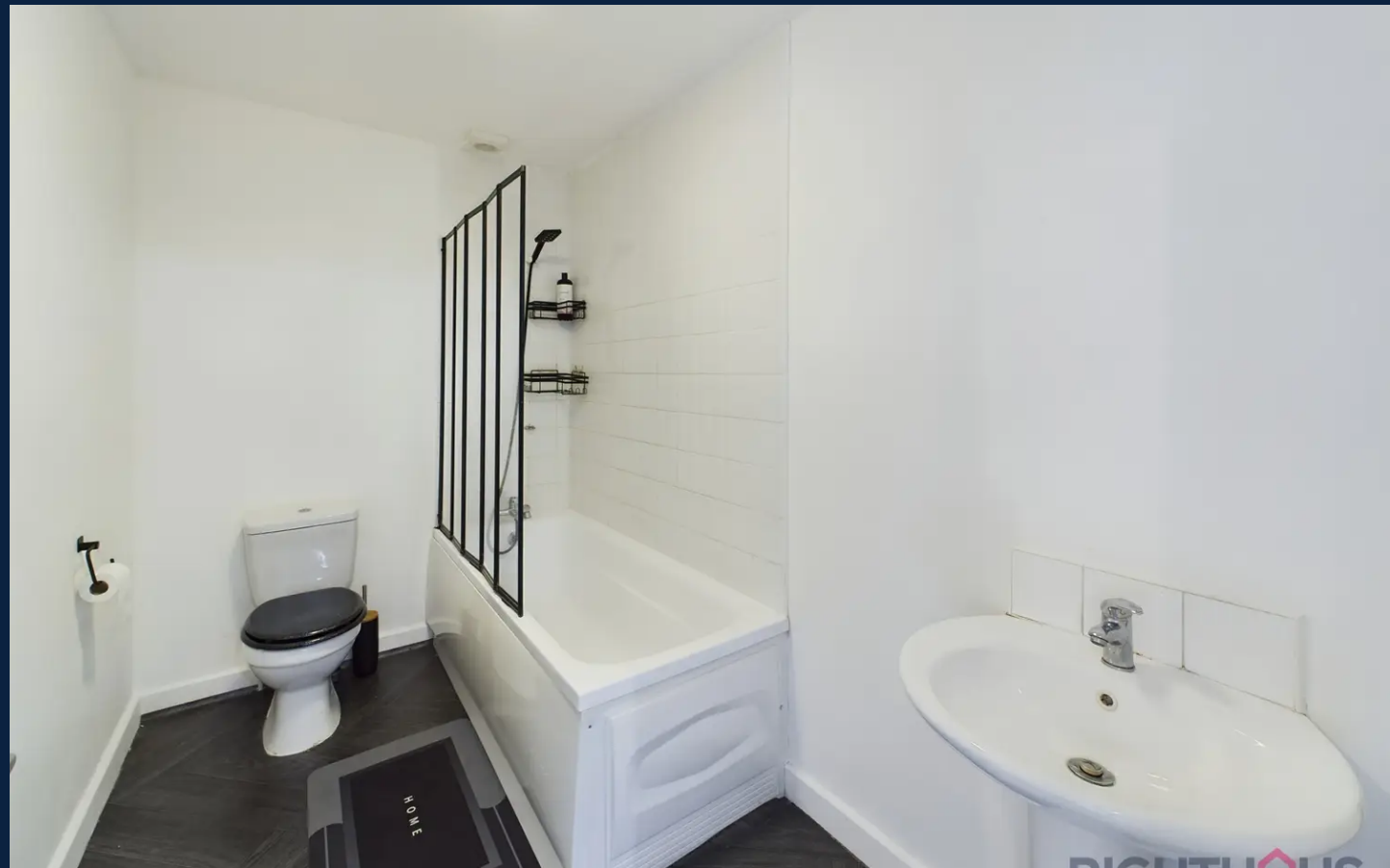
Bedroom

The second bedroom benefits from neutral decor as well as the comfort of gas central heating and double glazing

Bedroom

Bathroom

The family bathroom is partially tiled and features a 3-piece suite, which includes a panelled bath, a low level W.C., a pedestal hand basin



ON STREET

1 Parking Space



RIGHTHO
Make it your Rightmove

RIGHTHO
Make it your Rightmove



Righthaus Estate Agents

Righthaus Estate Agents, 208 High Street - BD6 1QP

01274 813500

Wibsey@yourrighthaus.co.uk

www.yourrighthaus.co.uk/



RIGHTHAUS
SALES LETTINGS AUCTIONS